

# 1

## NOTE:

Vintage Mamba, Gladiator Pro don't need any changes inside base. Skip to 7-8.

Black Mamba don't need to install adapter PCB. Skip to 5-4.

North America

<https://vkbcontrollers.com/>

Europe

<https://flightsimcontrols.com/>

Russia

<http://vkb-sim.pro/>



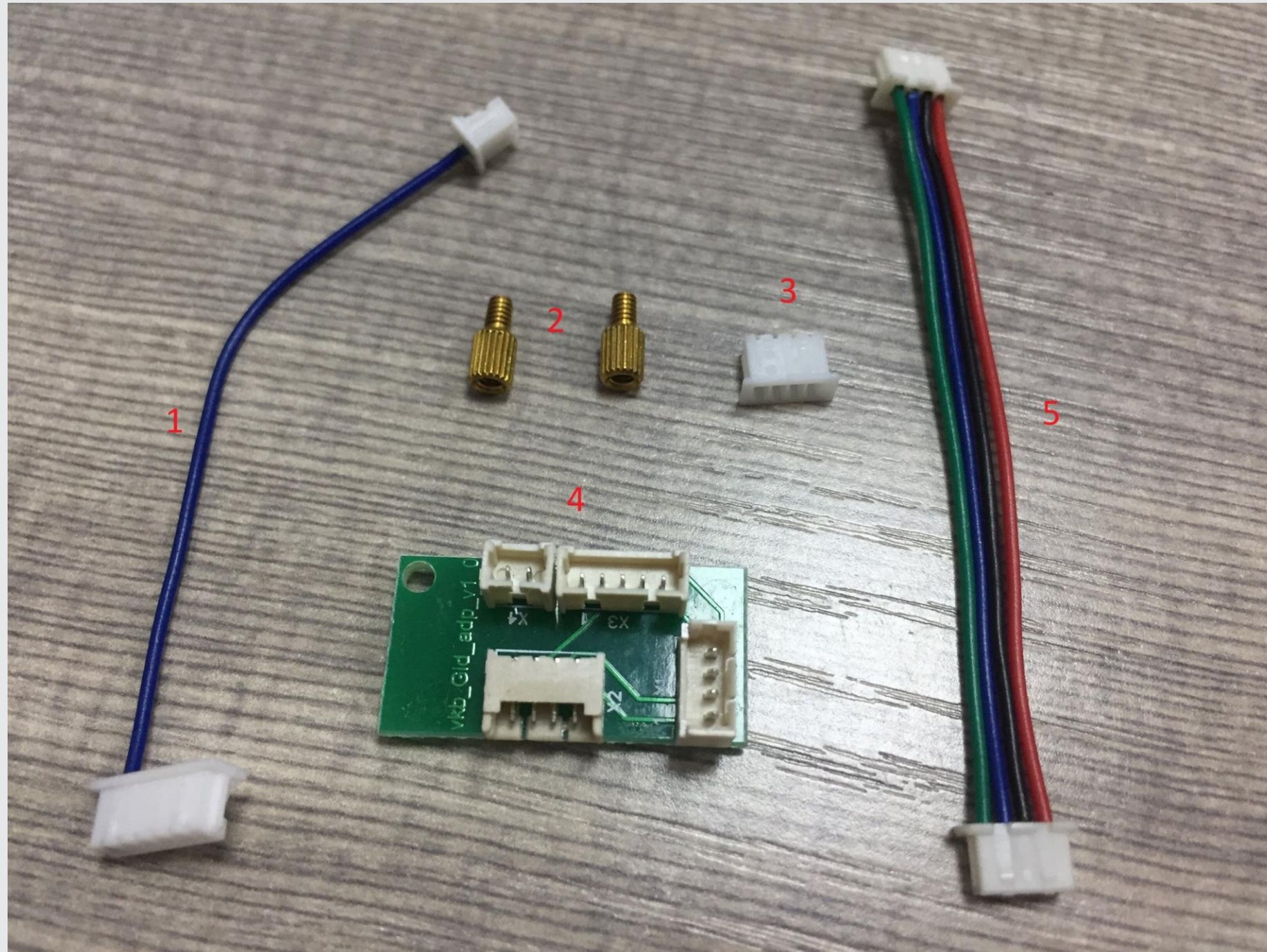
## Mamba w/ MCG Pro

## QUICK GUIDE

# 2

## Kit includes:

1. 6-pin to 2-pin connector.
2. 2 copper screws.
3. 4-pin plug for Black Mamba only.
4. Adapter PCB.
5. 4-pin connector.
6. MCG Pro with 5-pin connector.

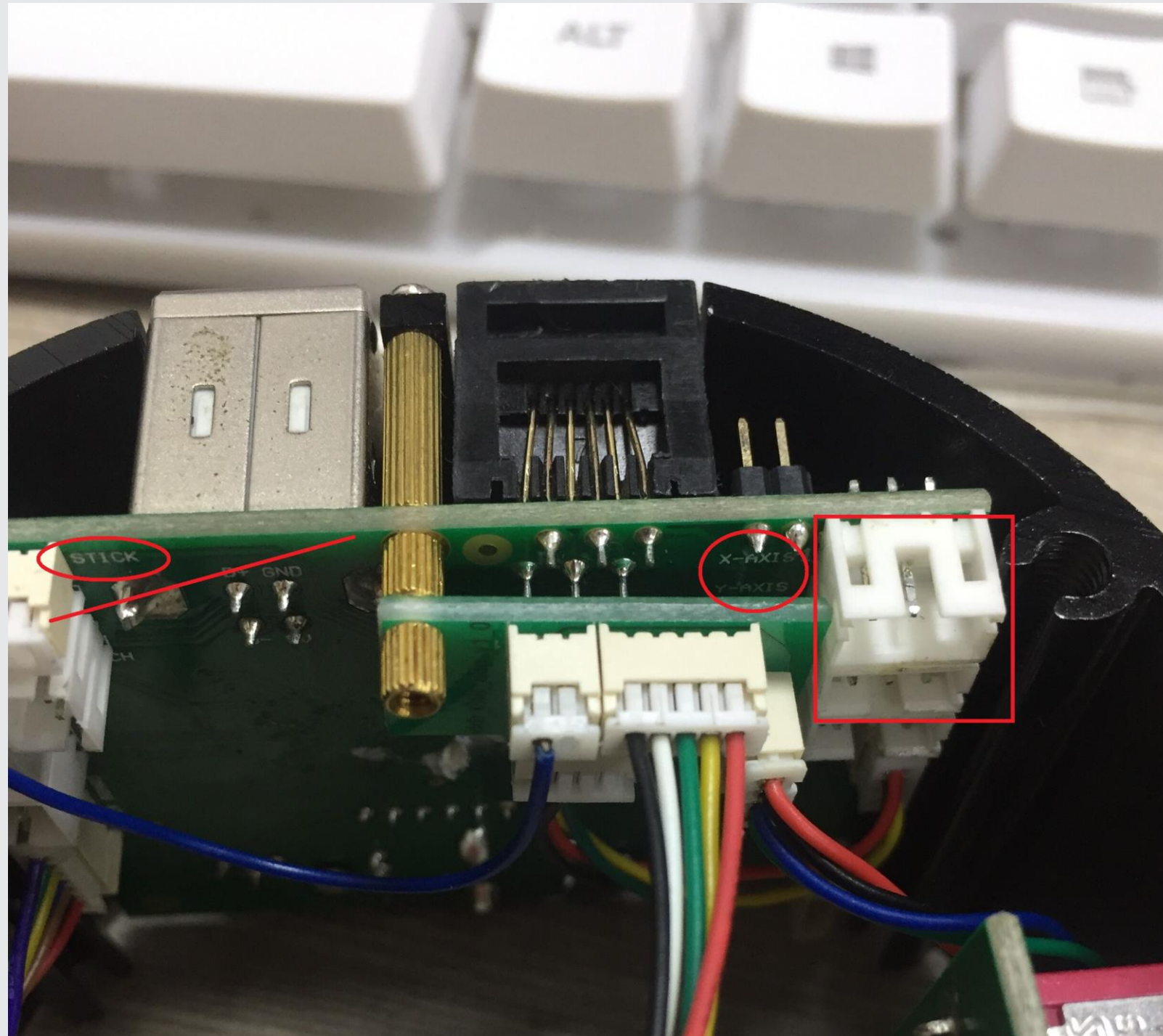




# 3

## Disassembling:

1. Remove the screws and take out the base plate.
2. Disconnect X-AXIS, Y-AXIS, WARTHOG connectors and remove the gimble.



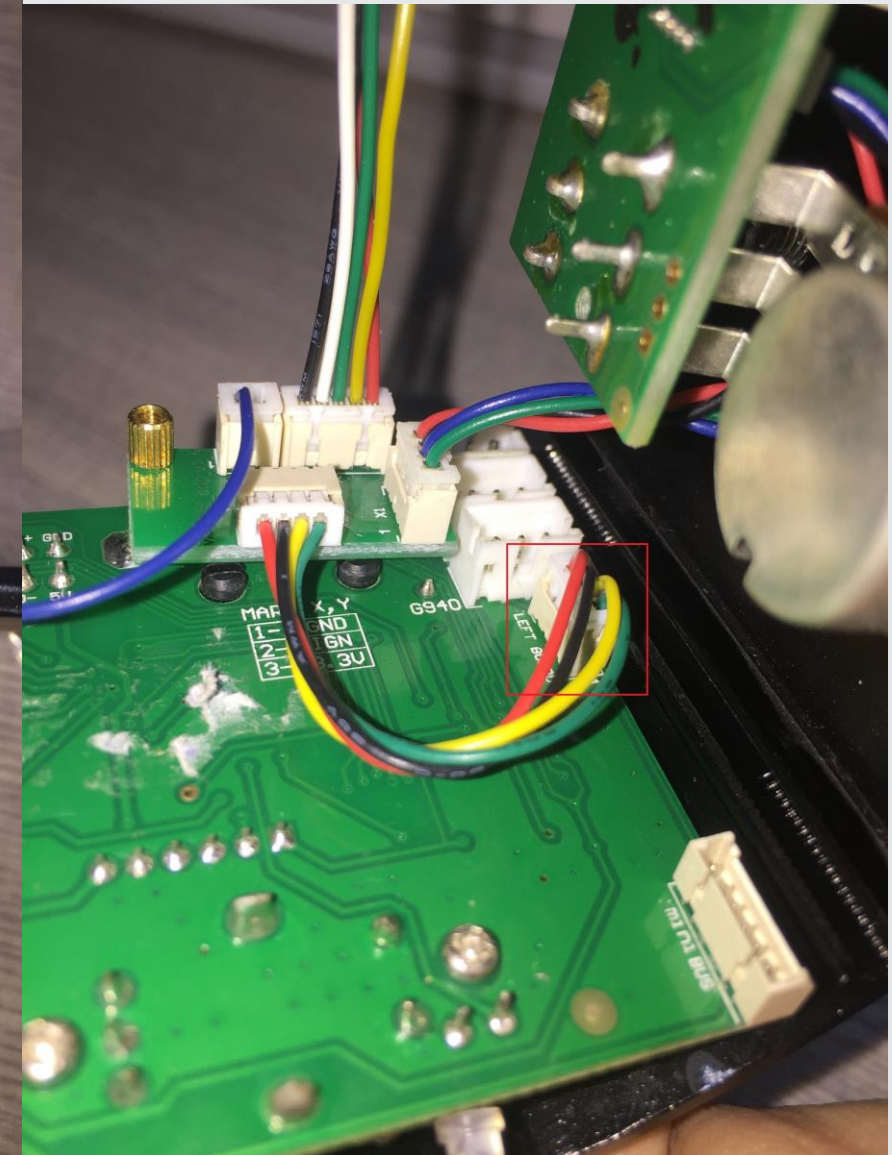
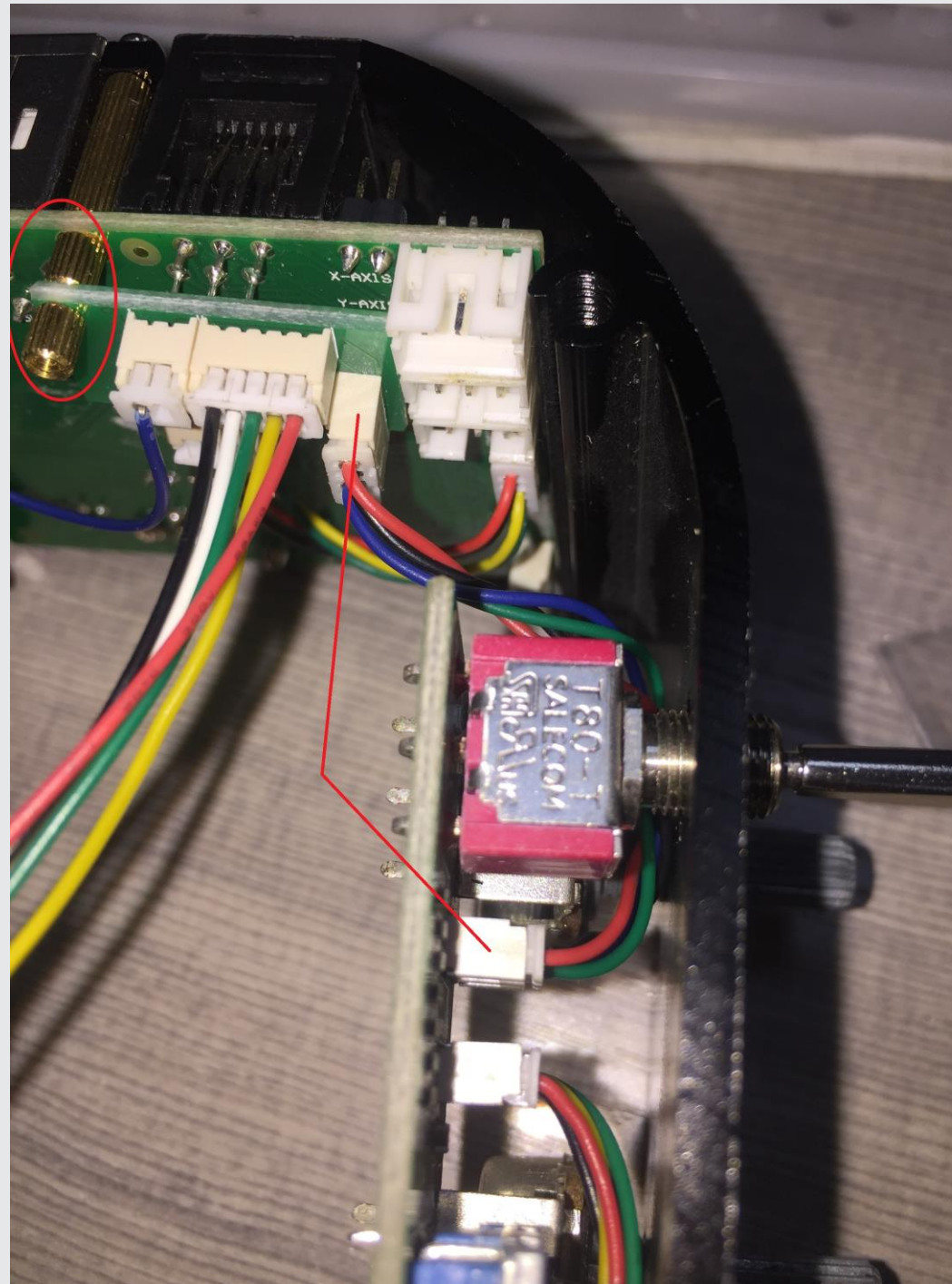


# 4

## Installation:

1. Install the adapter PCB and fix it with copper screws.
2. Connect the 4-pin connector which is disconnected from LEFT BOARD socket to adapter PCB. Connect as the picture shows on the left.
3. Take the 4-pin connector, connect LEFT BOARD socket and adapter PCB. Connect as the picture shows on the right.

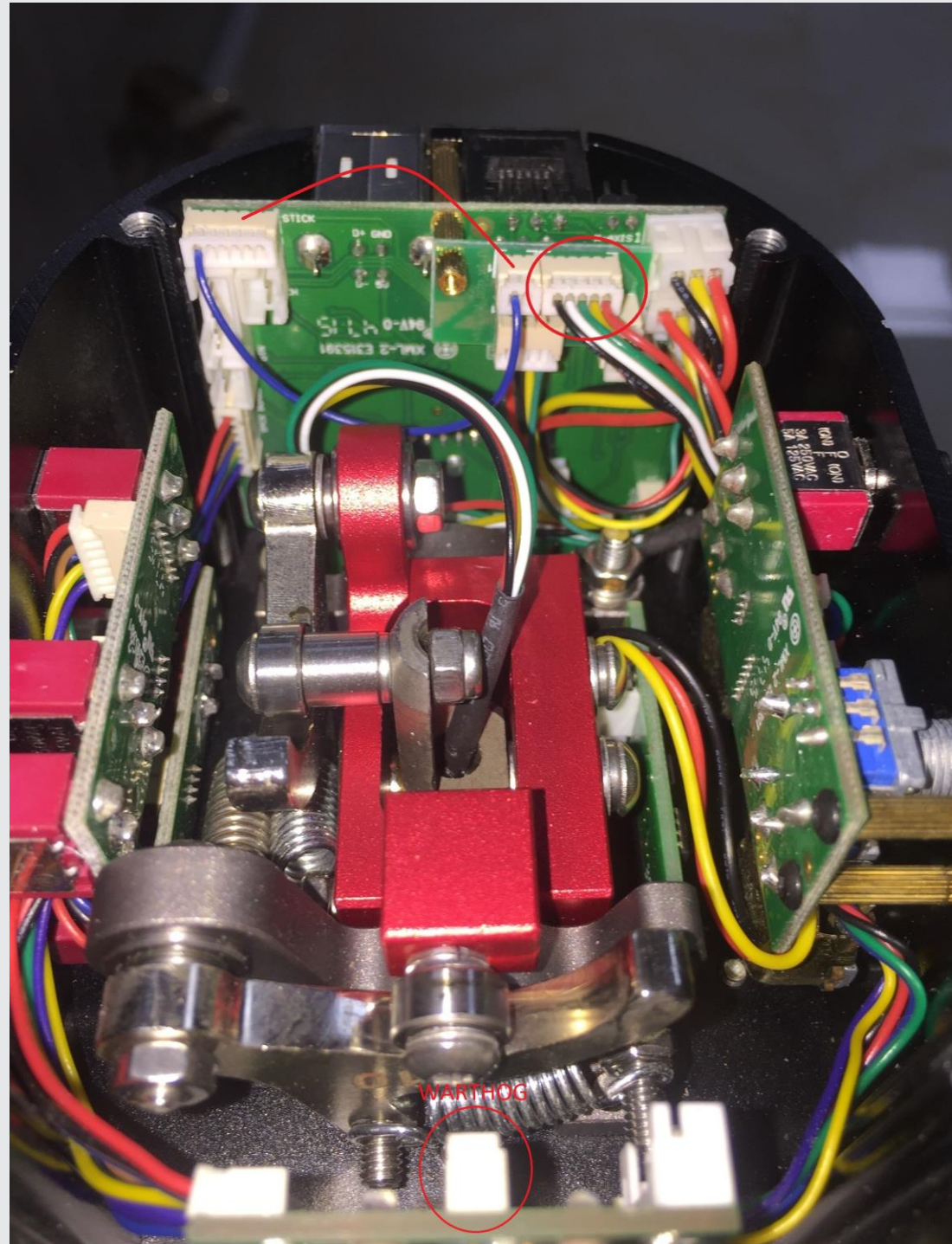
**NOTE: Please double check 4-pin connectors, must connect as pictures shows.**





# 5

4. Take the 6-pin to 2-pin connector, connect STICK socket and adapter PCB.  
  
For Black Mamba, replace the 6-pin plug with 4-pin plug.
5. Install the gimble and connect its 5-pin connector to adapter PCB. And connect X-AXIS, Y-AXIS connectors.

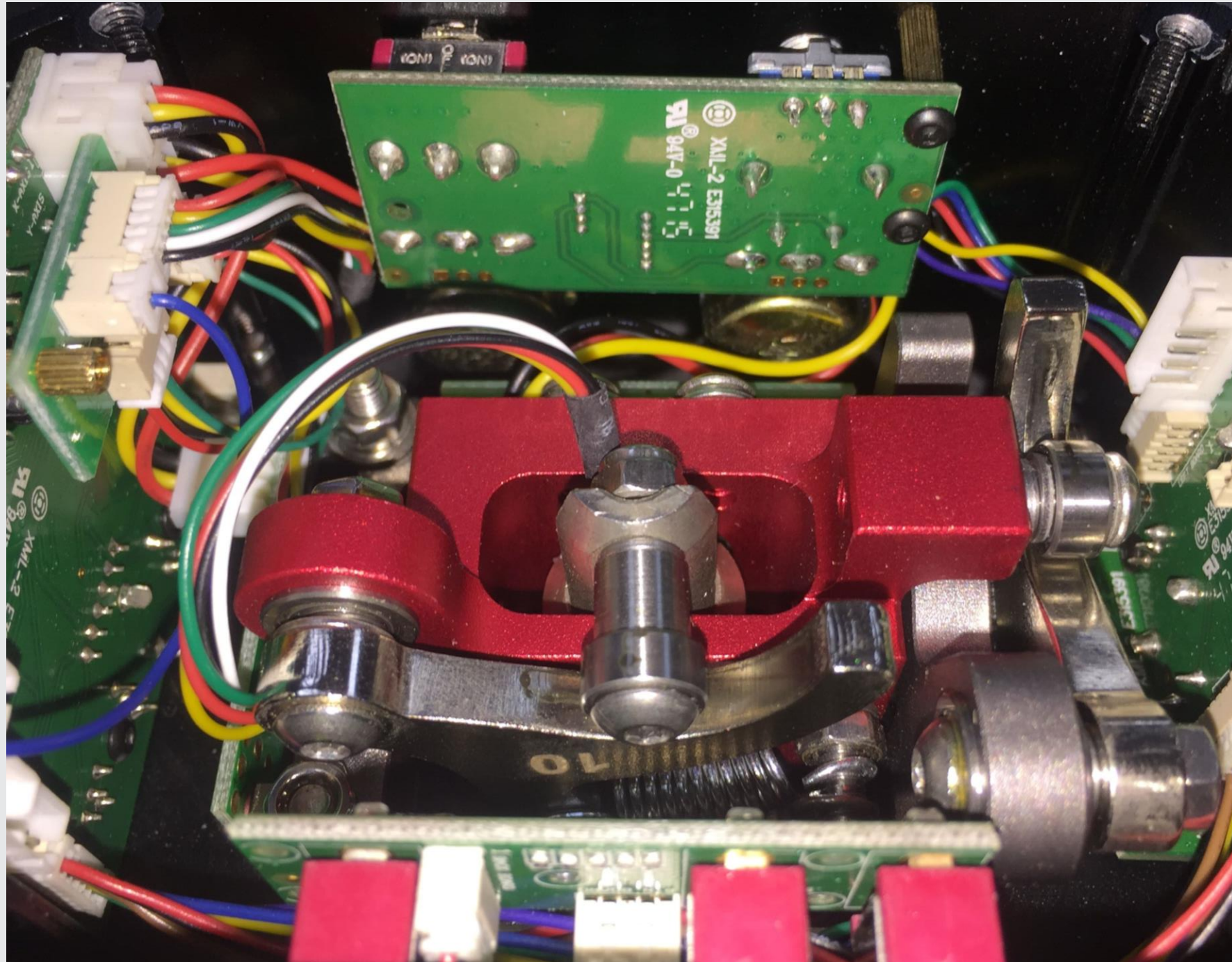




# 6

## Assembling:

6. Arrange cables and make sure it won't go into any gaps.
7. Check every cables and plugs, make sure it's in correct position and connect well.





# 7

8. Connect the connector of grip, then install the grip and tighten it.
9. Download [VKBDevCfg \(v0.90.3.5\)](#) and [firmware for Mamba w/ MCG Pro](#).

For Gladiator Pro, download [GI MCG MCG-Pro v1 94 B](#).

**NOTE: Please check the latest firmware on our websites.**

10. Load the firmware and calibrate your stick.
11. Check your stick. If everything is OK, install the base plate.
12. You are cleared for takeoff, have a nice flight.

